

# Academy Conversion Parent Consultation

Tuesday 2<sup>nd</sup> February



Edith Stein Multi Academy Trust

# Welcome and Introduction

- ▶ Welcome
- ▶ Prayer
- ▶ Introduction

Chair of Governors

Tom Blair

Fr Rinda Emmanuel

Chair of Governors

Tom Blair

# Context

- Corpus Christi – Ofsted category 4
- Academy Order raised
- By law Corpus Christi has to become an Academy
- Work began some time ago to find a sponsor
- Diocese keen for it to remain within the ‘family’
- *The Diocese has an agreement with the DfE that should a church school become an academy then this can only happen with the approval of the Diocesan Education Board and, if sponsored, then the sponsor must be a church / faith multi-academy trust.*



# What is Edith Stein Multi academy trust

- Edith Stein Multi Academy Trust was formally Catholic Academy Trust In Havant
- Established by the Dioceses 2010
- Multi Academy Trust
- Single school – Oaklands although Academy led solution for Christ the King IOW



# What are Academies?

- Publicly funded independent local schools
- Free from local education authority
- Funded directly from Department for Education on a per pupil bases (as now)
- Access to alternative funding streams
- Governors members of Academy Trust (a charitable company limited by Guarantee)
- The trust is the employer of school staff
- Catholic Trust building and land still owned by the Diocese



# What are academies?

- Have to adopt fair and clear admission arrangements (no change)
- Have to adopt SEND Code of Practice and support our most vulnerable pupils.
- Funded the same as Local Authority but with additional funding that the LA 'top slices' and spends centrally
- Increased control over resources
- More autonomy over curriculum, design and implementation

Ofsted and external partners continue to monitor quality of education, safeguarding and school life.



# Legal Structure

5 Members

Signatories to the Memorandum and Articles of Association appointed by Diocese

Trust Board

Skills based. Representatives from each School plus external Trustees with business skills

Local Governing Bodies

Largely existing Governing Bodies, responsible for day to day running of schools with Head Teacher



# Governance Structure

## Members

- ▶ Equivalent to shareholders of a company. They have ultimate control over the academy trust – appoint trustees, right to amend their Memorandum and Articles of Association . Hold Trustees to account. They are appointed by the Bishop.

## Trustees

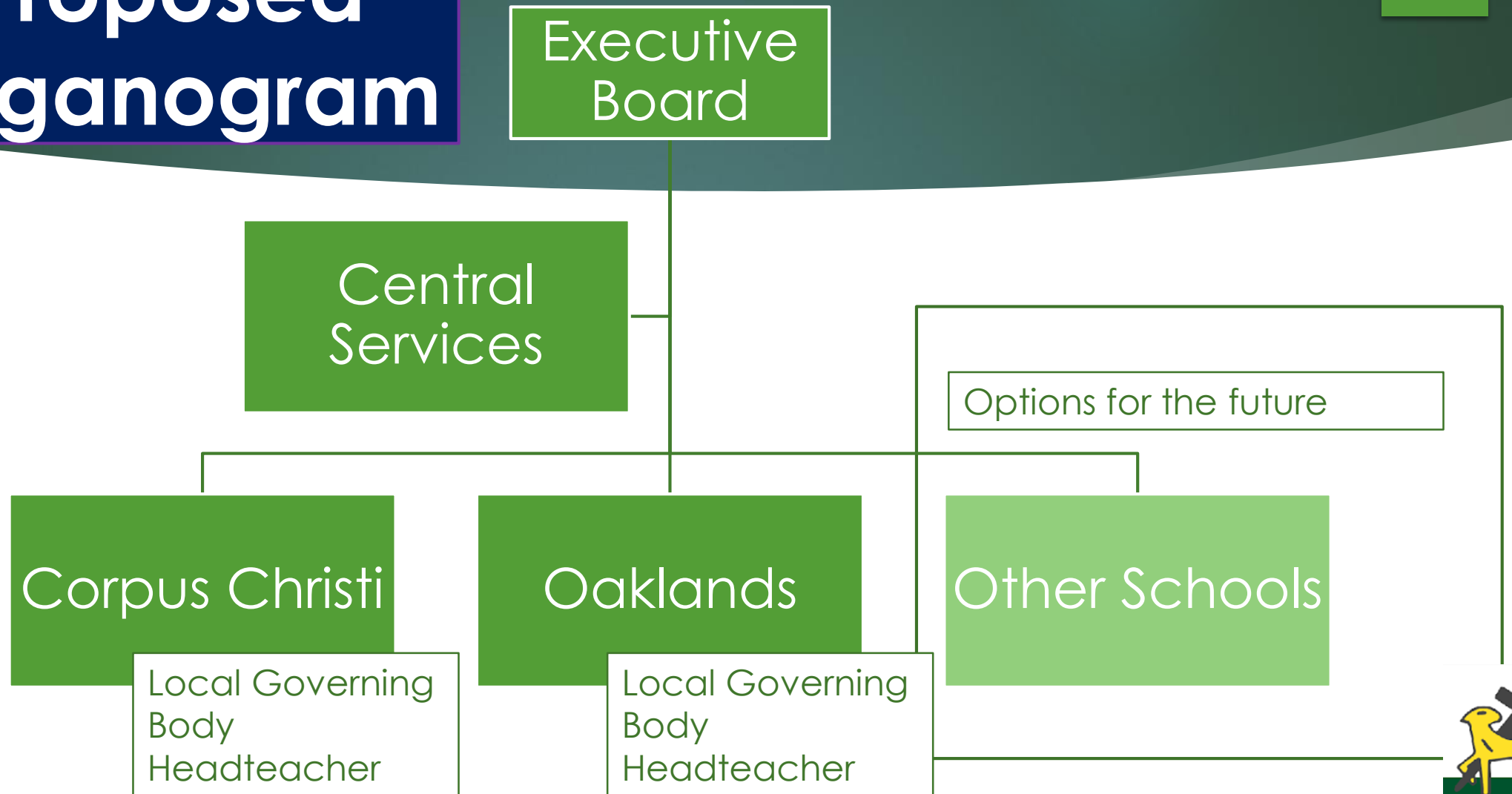
- ▶ Responsible for the same three governance functions performed by a Governing Body in a maintained school. Setting vision, holding the principal to account and financial probity. As charitable trustees also ensure compliance with charity law. Trustees are company directors.

## Local Governors

- ▶ Sit on the Local Governing Body (LGB). Trustees can delegate responsibilities to the LGB. Vast majority of work in governing the school is still undertaken by the LGB.



# Proposed Organogram



# Progress To Date

- Expansion of MAT approved by the Catholic Dioceses
- Organisation and expansion of members from 3 to 5
- Edith Stein has been approved as a sponsoring academy by DfE and approved to incorporate Corpus Christi
- Modelling the projected finances of Trust to ensure it is sustainable
- Due diligence progressing
- Establishing a small Project Steering Group
- Meeting with staff
- Target conversation date of the 1<sup>st</sup> April



# Next Steps

- Consultation exercise Staff and Parents
- Trustees of Edith Stein to review due diligence exercise
- TUPE consultation with staff
- Legal work to transfer assets to the Trust and set up Governance arrangements
- Finance work to set up new financial systems and procedures and procure Auditors
- Work underway and aiming for 1<sup>st</sup> April 2021 start date.



# Impact

- No change in School's ethos
- No change of name
- No change of uniform
- No corporate branding
- Our staff will still be here

- Parent community will still be at the heart of Corpus Christi
- Opportunity to develop close link eg transition for Yr6/7
- Peripheral changes
- Professional development for staff.



**Any  
Questions?**

**Your opportunity to  
ask questions**

